

4 Bed Penthouse For Sale

€1,150,000

Benalmadena Costa, Costa del Sol

Ref: APEX04408093

This exclusive, brand new penthouse with panoramic views of Benalmádena Costa is simply stunning. With four spacious bedrooms and impeccable decor featuring high-end designer furnishings, this penthouse is a true gem of Mediterranean living. Upon entry, the impressive foyer welcomes you with an elegant and contemporary design. The spacious living room boasts large windows that flood the space with natural light and offer stunning views of the sea from every angle. The designer furniture perfectly complements the modern decor, creating an atmosphere of elegance and sophistication throughout. The state-of-the-art kitchen is perfect for foodies, equipped with the latest appliances and a central island that makes it the ideal spot to cook and enjoy a meal with family or friends. The dining a...

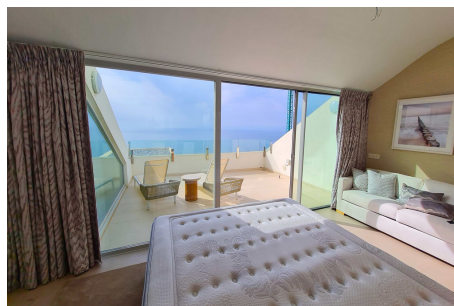
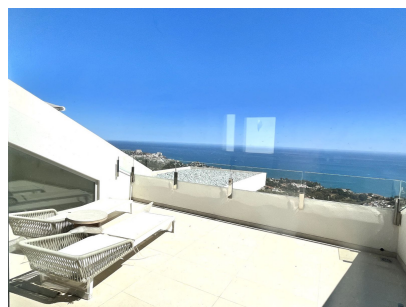
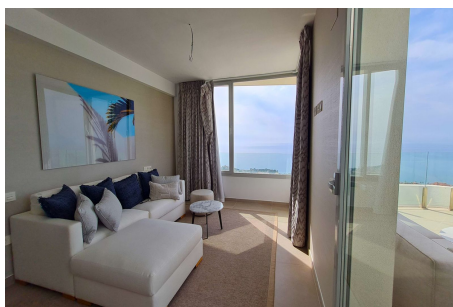
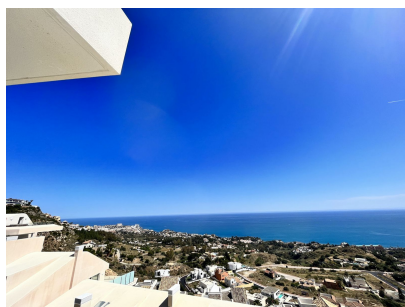
Telephone: +34 691 71 05 45

Email: sergio@apexmarbella.com

APEX Marbella Property CC Doña Pepa. Local 6, La Reserva de Marbella - 29604, Marbella - Málaga

APEX MARBELLA
PROPERTY

Gallery



Property Description

Location: Benalmadena Costa, Costa del Sol, Spain

This exclusive, brand new penthouse with panoramic views of Benalmádena Costa is simply stunning. With four spacious bedrooms and impeccable decor featuring high-end designer furnishings, this penthouse is a true gem of Mediterranean living.

Upon entry, the impressive foyer welcomes you with an elegant and contemporary design. The spacious living room boasts large windows that flood the space with natural light and offer stunning views of the sea from every angle. The designer furniture perfectly complements the modern decor, creating an atmosphere of elegance and sophistication throughout.

The state-of-the-art kitchen is perfect for foodies, equipped with the latest appliances and a central island that makes it the ideal spot to cook and enjoy a meal with family or friends. The dining area features a large, comfortable table that allows all guests to enjoy dinner with panoramic views of the Mediterranean.

The four bedrooms feature a minimalist style and are furnished with high-quality designer furniture, offering maximum comfort and luxury. The master suite is simply stunning, with a large walk-in closet and a private bathroom with high-end finishes. Additionally, the three additional bedrooms are equally cozy and offer ample closet space for storage.

This brand new penthouse also features a spacious terrace on the main floor with panoramic views of the Mediterranean. Furthermore, the penthouse is equipped with the latest technologies, from the centralized air conditioning system to the home automation that controls the lighting and security systems.

In summary, this brand new modern penthouse with panoramic views of Benalmádena Costa is the home of your dreams come true. Enjoy exclusivity, sophistication, and comfort in one of the most sought-after areas of the Costa del Sol. Don't miss the opportunity to live in this stunning designer penthouse!

2 parking spaces and a very large storage room.

Stupa hills is a prestigious gated new complex with very special situation overlooking the Mediterranean sea and next to Buddhist Stupa.

The complex is secure with two swimming pools, wellness area with gym, covered heated swimming pool, sauna, turkish bath.

Telephone: +34 691 71 05 45

Email: sergio@apexmarbella.com

APEX Marbella Property CC Doña Pepa. Local 6, La Reserva de Marbella - 29604, Marbella - Málaga



Additional Info

For Sale	Beds: 4	Baths: 3
Type: Penthouse	Area: 304 sq m	Pool
Orientation: South	Condition: New Construction	Pool: Communal
Indoor	Heated	Climate Control: Air Conditioning
Views: Sea	Mountain	Panoramic
Lift	Fitted Wardrobes	Near Transport
Private Terrace	Solarium	WiFi
Gym	Sauna	Storage Room
Ensuite Bathroom	Double Glazing	Fiber Optic
Furniture: Fully Furnished	Kitchen: Fully Fitted	Garden: Communal
Security: Gated Complex	Entry Phone	Parking: Garage
More Than One	Category: Holiday Homes	Luxury
Resale	Contemporary	Internal Area : 304 sq m

Telephone: +34 691 71 05 45

Email: sergio@apexmarbella.com

APEX Marbella Property CC Doña Pepa. Local 6, La Reserva de Marbella - 29604, Marbella - Málaga

