



2 Bed Apartment For Sale

€1,000,000

Puerto Banús, Costa del Sol

Ref: APEX04415785

Duplex penthouse with an incredible terrace and panoramic views, in the heart of Puerto Banus. If you are looking for an oasis of comfort and elegance in Puerto Banus, one of the most exclusive destinations in Europe, this beautiful duplex penthouse, in perfect condition, could be the ideal property. It is worth mentioning its generous terrace of 92 m2s, which becomes a dream corner to enjoy unforgettable outdoor moments, with 360 degrees panoramic views. The price includes a parking space and a storage room. Situated in a privileged area of Puerto Banús, close by the Meliá Banus hotel, the property offers an ideal location with easy access to restaurants and beach clubs. Furthermore, residents can enjoy ample green areas and a communal swimming pool. Do not hesitate to contact us...

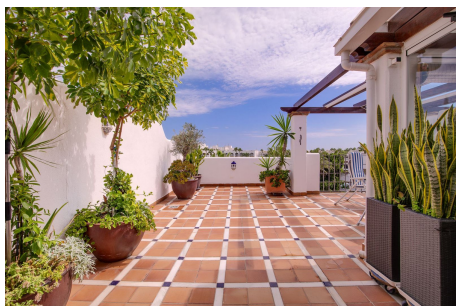
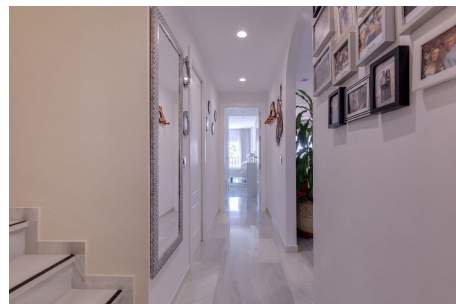
Telephone: +34 691 71 05 45

Email: sergio@apexmarbella.com

APEX Marbella Property CC Doña Pepa. Local 6, La Reserva de Marbella - 29604, Marbella - Málaga

APEX MARBELLA
PROPERTY

Gallery



Property Description

Location: Puerto Banús, Costa del Sol, Spain

Duplex penthouse with an incredible terrace and panoramic views, in the heart of Puerto Banus.

If you are looking for an oasis of comfort and elegance in Puerto Banus, one of the most exclusive destinations in Europe, this beautiful duplex penthouse, in perfect condition, could be the ideal property.

It is worth mentioning its generous terrace of 92 m2s, which becomes a dream corner to enjoy unforgettable outdoor moments, with 360 degrees panoramic views.

The price includes a parking space and a storage room.

Situated in a privileged area of Puerto Banús, close by the Meliá Banus hotel, the property offers an ideal location with easy access to restaurants and beach clubs. Furthermore, residents can enjoy ample green areas and a communal swimming pool.

Do not hesitate to contact us to request a viewing.

Additional Info

For Sale	Beds: 2	Baths: 2.5
Type: Apartment	Area: 206 sq m	Pool
Setting: Town	Beachside	Close To Port
Close To Shops	Close To Sea	Close To Marina
Urbanisation	Orientation: South	Condition: Good
Pool: Communal	Children`s Pool	Climate Control: Air Conditioning
Views: Sea	Mountain	Panoramic
Covered Terrace	Lift	Fitted Wardrobes
Private Terrace	Solarium	Storage Room
Ensuite Bathroom	Double Glazing	Kitchen: Fully Fitted
Garden: Communal	Security: Gated Complex	Parking: Underground
Garage	Utilities: Electricity	Drinkable Water
Category: Holiday Homes	Investment	Contemporary
Internal Area : 206 sq m		

Telephone: +34 691 71 05 45

Email: sergio@apexmarbella.com

APEX Marbella Property CC Doña Pepa. Local 6, La Reserva de

Marbella - 29604, Marbella - Málaga

