

## 36 Bed Commercial Plot For Sale

**€2,750,000**

**Cancelada, Costa del Sol**

**Ref: APEX04336051**

2-star hostel, called , located in the Cancelada area, between Avenida de las Palmeras and Calle Carmen Conde, it has 36 rooms distributed over 3 floors, of which there are 17 singles and 19 doubles, with capacity for 55 people. Cancelada is a neighborhood belonging to the municipality of Estepona, located in the part eastern east, equipped with all services. communications are excellent, being next to the Autovía del Mediterráneo, 5 minutes by car from the beach, 15 minutes walk. Located between the municipalities of Estepona and San Pedro from Alcantar and Marbella. It has two bus lines that connect the themselves

**Telephone: +34 691 71 05 45**

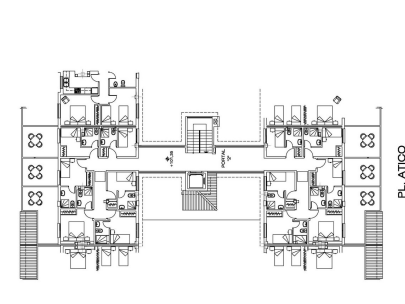
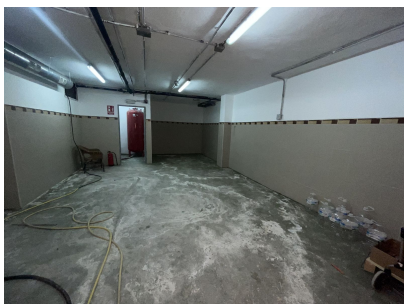
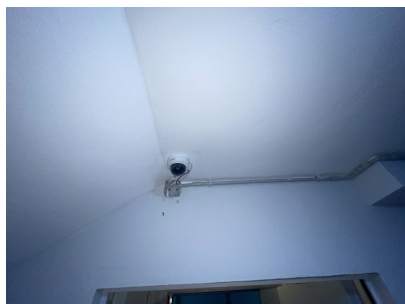
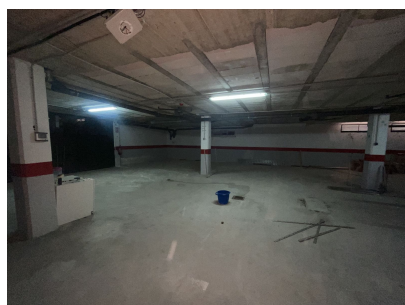
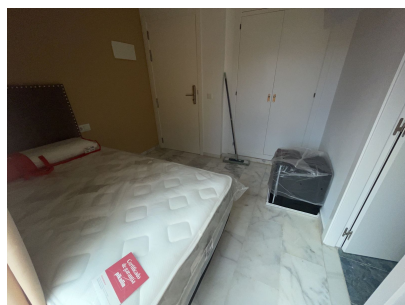
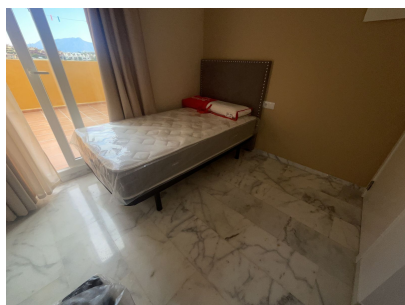
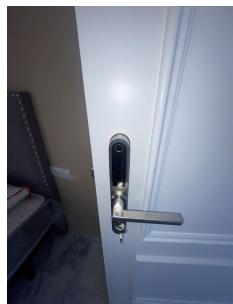
**Email: [sergio@apexmarbella.com](mailto:sergio@apexmarbella.com)**

APEX Marbella Property CC Doña Pepa. Local 6, La Reserva de Marbella - 29604, Marbella - Málaga

**APEX MARBELLA**  
PROPERTY



# Gallery



# Property Description

**Location:** Cancelada, Costa del Sol, Spain

2-star hostel, called , located in the Cancelada area, between Avenida de las Palmeras and Calle Carmen Conde, it has 36 rooms distributed over 3 floors, of which there are 17 singles and 19 doubles, with capacity for 55 people.

Cancelada is a neighborhood belonging to the municipality of Estepona, located in the part eastern east, equipped with all services. communications are excellent, being next to the Autovía del Mediterráneo, 5 minutes by car from the beach, 15 minutes walk. Located between the municipalities of Estepona and San Pedro from Alcantar and Marbella. It has two bus lines that connect the themselves

**Telephone:** +34 691 71 05 45

**Email:** [sergio@apexmarbella.com](mailto:sergio@apexmarbella.com)

APEX Marbella Property CC Doña Pepa. Local 6, La Reserva de Marbella - 29604, Marbella - Málaga



# Additional Info

For Sale	Beds: 36	Baths: 37
Type: Commercial Plot	Area: 1490 sq m	Setting: Commercial Area
Close To Golf	Close To Shops	Close To Sea
Close To Town	Close To Schools	Orientation: East
West	Condition: Excellent	Recently Renovated
Climate Control: Air Conditioning	Views: Mountain	Panoramic
Lift	Fitted Wardrobes	Near Transport
Private Terrace	WiFi	Storage Room
Furniture: Fully Furnished	Kitchen: Fully Fitted	Security: Gated Complex
Parking: Underground	More Than One	Internal Area : 1490 sq m

Telephone: +34 691 71 05 45

Email: [sergio@apexmarbella.com](mailto:sergio@apexmarbella.com)

APEX Marbella Property CC Doña Pepa. Local 6, La Reserva de Marbella - 29604, Marbella - Málaga

