



## Commercial Plot For Sale

**Alosaina, Costa del Sol**

**€325,000**

**Ref: APEX04316929**

Spacious and bright commercial local in the town of ALOZAINA (Malaga). THE GROUND FLOOR has a built area of 181 m2. and is accessed from the street. Very bright as it is on the corner and has three facades with large windows. The last use of the premises was as a restaurant and maintains the bar, the kitchen and two toilets. Large open spaces. THE BASEMENT FLOOR has a constructed area of 300 m2. It has two accesses; An access from the premises and an access from the street behind the entrance of the premises. This floor has a parking capacity for 4 large vehicles. In addition the space is conditioned to hold events as it has a bar and toilets. open space. Good business opportunity in the mountains of Malaga.

**Telephone: +34 691 71 05 45**

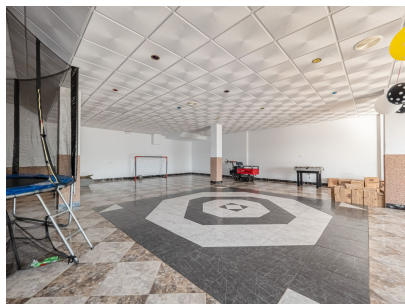
**Email: [sergio@apexmarbella.com](mailto:sergio@apexmarbella.com)**

APEX Marbella Property CC Doña Pepa. Local 6, La Reserva de Marbella - 29604, Marbella - Málaga

**APEX MARBELLA**  
PROPERTY



# Gallery



# Property Description

**Location:** Alozaina, Costa del Sol, Spain

Spacious and bright commercial local in the town of ALOZAINA (Malaga).

THE GROUND FLOOR has a built area of 181 m2. and is accessed from the street. Very bright as it is on the corner and has three facades with large windows. The last use of the premises was as a restaurant and maintains the bar, the kitchen and two toilets. Large open spaces.

THE BASEMENT FLOOR has a constructed area of 300 m2. It has two accesses; An access from the premises and an access from the street behind the entrance of the premises. This floor has a parking capacity for 4 large vehicles. In addition the space is conditioned to hold events as it has a bar and toilets. open space.

Good business opportunity in the mountains of Malaga.

**Telephone:** +34 691 71 05 45

**Email:** [sergio@apexmarbella.com](mailto:sergio@apexmarbella.com)

APEX Marbella Property CC Doña Pepa. Local 6, La Reserva de Marbella - 29604, Marbella - Málaga



# Additional Info

For Sale	Baths: 3	Type: Commercial Plot
Area: 481 sq m	Setting: Country	Village
Mountain Pueblo	Close To Shops	Close To Schools
Close To Forest	Orientation: North East	South East
South West	Condition: Good	Views: Mountain
Country	Storage Room	Furniture: Not Furnished
Kitchen: Partially Fitted	Parking: Underground	Garage
Covered	More Than One	Private
Utilities: Electricity	Drinkable Water	Gas
Category: Investment	Internal Area : 481 sq m	

Telephone: +34 691 71 05 45

Email: [sergio@apexmarbella.com](mailto:sergio@apexmarbella.com)

APEX Marbella Property CC Doña Pepa. Local 6, La Reserva de Marbella - 29604, Marbella - Málaga

