



## 3 Bed Middle Floor Apartment For Sale

**Atalaya, Costa del Sol**

**€760,000**

**Ref: APEX04295419**

An excellent, new and modern 3 bedroom west facing apartment with a huge, sunny terrace set next to some of the best of 80 golf courses on the Costa del Sol Set in a fantastic location between Estepona and Marbella, just 3 km from the beautiful center of Benahavis. \*\*\*\*\*Only for rent from 15 of January until end of April \*\*\*\*\* Property: The apartment is bright with spacious living areas and large windows and sliding doors opening the living room with the large terrace. From the living room through the non-framed glass terrace spectacular views can be enjoyed of the nature surrounding area. This exclusive apartment is designed to make the best use of the natural light, bringing together interior and exterior spaces. The selection of materials has been carefully studied, high qual...

**Telephone: +34 691 71 05 45**

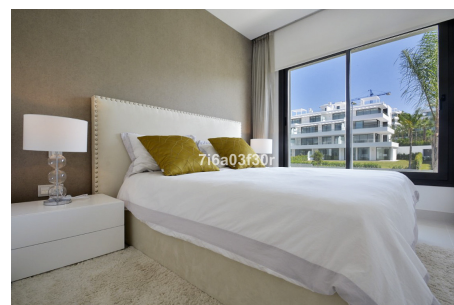
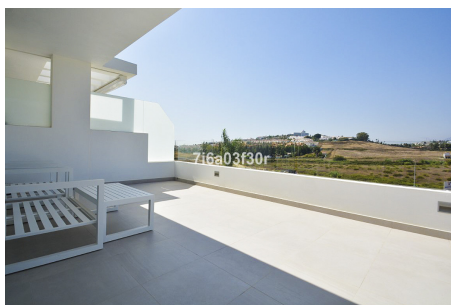
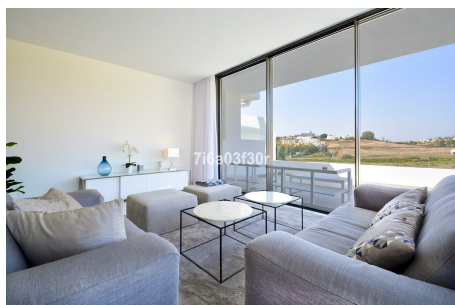
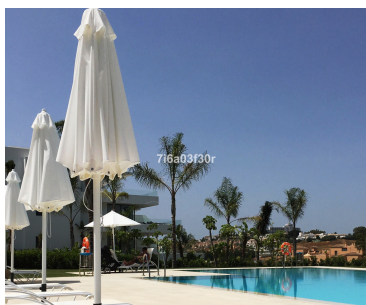
**Email: [sergio@apexmarbella.com](mailto:sergio@apexmarbella.com)**

APEX Marbella Property CC Doña Pepa. Local 6, La Reserva de Marbella - 29604, Marbella - Málaga

**APEX MARBELLA**  
PROPERTY



# Gallery



# Property Description

**Location:** Atalaya, Costa del Sol, Spain

An excellent, new and modern 3 bedroom west facing apartment with a huge, sunny terrace set next to some of the best of 80 golf courses on the Costa del Sol

Set in a fantastic location between Estepona and Marbella, just 3 km from the beautiful center of Benahavis.

\*\*\*\*\*Only for rent from 15 of January until end of April \*\*\*\*\*

Property:

The apartment is bright with spacious living areas and large windows and sliding doors opening the living room with the large terrace.

From the living room through the non-framed glass terrace spectacular views can be enjoyed of the nature surrounding area. This exclusive apartment is designed to make the best use of the natural light, bringing together interior and exterior spaces. The selection of materials has been carefully studied, high quality finishing's ensure the most comfort in lifestyle. The kitchens are fitted, with full-wall units white mat lacquered finish, by PORECELANO. With a "KRION" kitchen work surface and splash back integrated sink.

The master bedroom has a private bathroom and the bedroom 2 and 3 are sharing one bathroom. The apartment has two parking spaces. There is lift direct from the garage up to the apartment. This is a dream apartment for golf lovers, but also for just relaxing and enjoying the sun and life on the Costa del Sol.

Urbanization:

A new development of luxury modern open plan living apartments and penthouses in the most sought after area between Marbella and Estepona, the New Golden Mile. The urbanization finds itself in one of the most exclusive settings, surrounded by nature and close to all sort of amenities, services, restaurants, beaches, golf courses, schools, etc. An idyllic place to breathe pure air and tranquility while enjoying the countryside charm without renouncing to the luxury and services offered by the Costa del Sol.

Located in a well-established area of Estepona near Benahavis, home to more exclusive property developments and a growing number of new villas. The project sits alongside the grounds of Atalaya Golf and Country Club, close to the sea and surrounded by golf. With modern architecture and exclusive materials this development has it all!

Surrounded by Golf and greenery next to Atalaya Golf and Country Club, with two of the oldest 18 hole golf courses on the Costa del Sol. For Golf lovers this area is paradise with so many nice golf clubs nearby. A few to mention: Atalaya Golf and Country Club, Guadalmina Golf, El Paraiso Golf, Marbella Club Golf Resort, Los Arqueros Golf and Country Club, El Higueral Golf, Los Flamings Golf and many more..

Area:

Located on the road to Benahavis and is strategically located just beside the spectacular golf course

Atalaya Golf and Country Club. The complex is only two kilometre to the beach and a 2 minutes' drive to the motorway with easy access to the toll road which brings you to Malaga international airport within 40 minutes. The famous Puerto Banus and Marbella is just 7 minutes' drive away.

Nearby amenities include the new Bilingual School Atalaya which is just two minutes' walk away, as well as a leading supermarket. A short drive towards the mountains is the 'Old town of Benahavis', a typical Andalucian village which is known for its gastronomy and referred to as the kitchen of the Costa del Sol. For a morning coffee or healthy lunch at Pane e chocolate or delicious Spanish tapas at the Asador. Or for daily local shopping there is Guadalmina shopping center with great shops and restaurants just 3 minutes from your home. More a sports fanatic? You can cycle in the mountains or along the San Pedro Boulevard, play Golf or hike in the gorge...

#### Distances:

Approximate distances are:

San Pedro - 3 KM

Puerto Banus - 5 KM

Estepona - 10 KM

Marbella - 15 KM

Benahavis Village - 3 km

Gibraltar - 55 KM

Malaga Airport - 65 KM (45 minutes)

Ronda - 60 KM

#### Summary:

Middle Floor Apartment, Atalaya, Costa del Sol.

3 Bedrooms, 2 Bathrooms, Built 122 m2, Terrace 51 m2.

Setting : Close To Golf, Close To Shops, Close To Sea, Close To Town, Close To Schools, Urbanization.

Orientation : West.

Condition : Excellent.

Pool : Communal.

Climate Control : Air Conditioning, Hot A/C, Cold A/C, U/F/H Bathrooms.

Views : Mountain, Panoramic, Garden, Courtyard.

Features : Fitted Wardrobes, Private Terrace, Satellite TV, ADSL / WIFI, Storage Room, Ensuite Bathroom, Disabled Access, Marble Flooring, Double Glazing.

Furniture : Fully Furnished.

Kitchen : Fully Fitted.

Garden : Communal.

Security : Gated Complex, Entry Phone.

Parking : Underground, More Than One.

Utilities : Electricity, Drinkable Water, Telephone.

Category : Golf, Holiday Homes, Luxury, Contemporary.

**Telephone: +34 691 71 05 45**

**Email: [sergio@apexmarbella.com](mailto:sergio@apexmarbella.com)**

APEX Marbella Property CC Doña Pepa. Local 6, La Reserva de Marbella - 29604, Marbella - Málaga



# Additional Info

For Sale	Beds: 3	Baths: 2
Type: Middle Floor Apartment	Area: 173 sq m	Pool
Setting: Close To Golf	Close To Shops	Close To Sea
Close To Town	Close To Schools	Urbanisation
Orientation: West	Condition: Excellent	Pool: Communal
Climate Control: Air Conditioning	Hot A/C	Cold A/C
U/F/H Bathrooms	Views: Mountain	Panoramic
Garden	Courtyard	Fitted Wardrobes
Private Terrace	Satellite TV	WiFi
Storage Room	Ensuite Bathroom	Access for people with reduced mobility
Marble Flooring	Double Glazing	Furniture: Fully Furnished
Kitchen: Fully Fitted	Garden: Communal	Security: Gated Complex
Entry Phone	Parking: Underground	More Than One
Utilities: Electricity	Drinkable Water	Telephone
Category: Golf	Holiday Homes	Luxury

Contemporary

Internal Area : 173 sq m

**Telephone: +34 691 71 05 45**

**Email: [sergio@apexmarbella.com](mailto:sergio@apexmarbella.com)**

APEX Marbella Property CC Doña Pepa. Local 6, La Reserva de  
Marbella - 29604, Marbella - Málaga

