



# Commercial Plot For Sale

**Coín, Costa del Sol**

**€280,000**

**Ref: APEX04221133**

Warehouse for commercial use in perfect condition. It can be easily adapted for all types of businesses. It has a mezzanine enabled for offices, storage... All the structures are made of top quality steel and the whole building has a double wall with thermo-acoustic coating, ceilings fitted out to let in sunlight and achieve natural lighting. Upward opening steel gate, security locks, polished cement floor. New electrical installation. Electricity sockets all around the perimeter of the warehouse. Constructed area: 320m2 The height of the warehouse is more than 5 metres and reaches up to 10 metres in the central part, which made it possible to build a mezzanine.

**Telephone: +34 691 71 05 45**

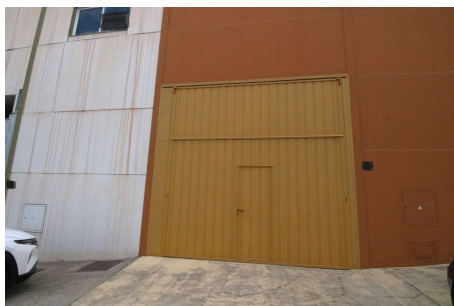
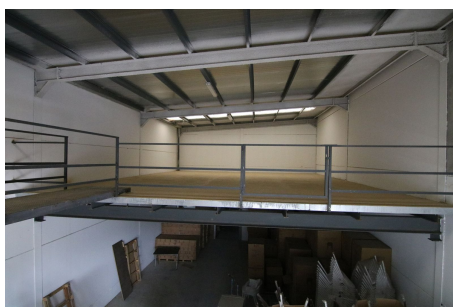
**Email: [sergio@apexmarbella.com](mailto:sergio@apexmarbella.com)**

APEX Marbella Property CC Doña Pepa. Local 6, La Reserva de Marbella - 29604, Marbella - Málaga

**APEX MARBELLA**  
PROPERTY



# Gallery



# Property Description

**Location:** Coín, Costa del Sol, Spain

Warehouse for commercial use in perfect condition.

It can be easily adapted for all types of businesses. It has a mezzanine enabled for offices, storage...

All the structures are made of top quality steel and the whole building has a double wall with thermo-acoustic coating, ceilings fitted out to let in sunlight and achieve natural lighting.

Upward opening steel gate, security locks, polished cement floor.

New electrical installation. Electricity sockets all around the perimeter of the warehouse.

Constructed area: 320m<sup>2</sup>

The height of the warehouse is more than 5 metres and reaches up to 10 metres in the central part, which made it possible to build a mezzanine.

**Telephone:** +34 691 71 05 45

**Email:** [sergio@apexmarbella.com](mailto:sergio@apexmarbella.com)

APEX Marbella Property CC Doña Pepa. Local 6, La Reserva de

Marbella - 29604, Marbella - Málaga



## Additional Info

For Sale	Type: Commercial Plot	Area: 320 sq m
Setting: Town	Commercial Area	Village
Orientation: South West	Condition: Excellent	Views: Country
Urban	Street	Parking: Open
Street	Utilities: Electricity	Drinkable Water
Telephone	Internal Area : 320 sq m	

Telephone: +34 691 71 05 45

Email: [sergio@apexmarbella.com](mailto:sergio@apexmarbella.com)

APEX Marbella Property CC Doña Pepa. Local 6, La Reserva de Marbella - 29604, Marbella - Málaga