



7 Bed Detached Villa For Sale

Benalmadena Costa, Costa del Sol

€990,000

Ref: APEX04206787

Charming Villa in Andalusian Finca style with guest accommodation, only 10 minutes walk from to beach, in Benalmádena Costa. This is a unique property, a world on it's own, set in an area with lot's of greenery. The main house has two bedrooms and two bathrooms. The living room is open to the well-equipped kitchen and a lovely covered terrace with the garden and a large pool in front. The property is south-facing. Close to the main house you will find a two-story building with two lovely spacious apartments, one on each floor and each with a kitchen, 2 bedrooms, and one bathroom. There's also a lovely 1 bedroom guest house with its own kitchen, bathroom, and its own terrace garden. 1.600m2 of land are included in the price where you can find a well that waters the entire garden

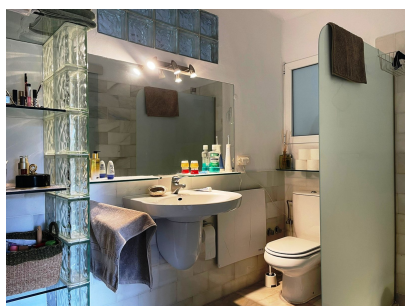
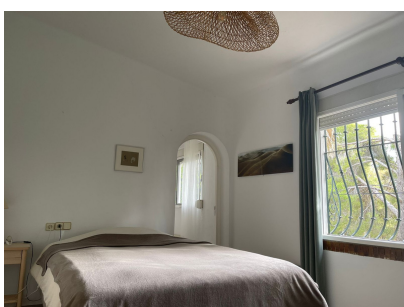
Telephone: +34 691 71 05 45

Email: sergio@apexmarbella.com

APEX Marbella Property CC Doña Pepa. Local 6, La Reserva de Marbella - 29604, Marbella - Málaga

APEX MARBELLA
PROPERTY

Gallery



Property Description

Location: Benalmadena Costa, Costa del Sol, Spain

Charming Villa in Andalusian Finca style with guest accommodation, only 10 minutes walk from to beach, in Benalmádena Costa.

This is a unique property, a world on it's own, set in an area with lot's of greenery.

The main house has two bedrooms and two bathrooms. The living room is open to the well-equipped kitchen and a lovely covered terrace with the garden and a large pool in front. The property is south-facing.

Close to the main house you will find a two-story building with two lovely spacious apartments, one on each floor and each with a kitchen, 2 bedrooms, and one bathroom.

There's also a lovely 1 bedroom guest house with its own kitchen, bathroom, and its own terrace garden.

1.600m² of land are included in the price where you can find a well that waters the entire garden

Additional Info

For Sale	Beds: 7	Baths: 5
Type: Detached Villa	Area: 450 sq m	Land Area: 3600 sq m
Pool	Setting: Beachside	Close To Golf
Close To Sea	Close To Schools	Orientation: South
Condition: Excellent	Pool: Private	Climate Control: Air Conditioning
Views: Sea	Mountain	Covered Terrace
Private Terrace	Guest House	Furniture: Not Furnished
Kitchen: Fully Fitted	Garden: Private	Security: Gated Complex
Parking: Private	Internal Area : 450 sq m	Land Size : 3600 sq m

Telephone: +34 691 71 05 45

Email: sergio@apexmarbella.com

APEX Marbella Property CC Doña Pepa. Local 6, La Reserva de Marbella - 29604, Marbella - Málaga

