



## Residential Plot For Sale

**Torreblanca, Costa del Sol**

**€375,000**

**Ref: APEX04203937**

Urban Plot with Partial Sea Views to build semi-detached villas!!! In the photos we have included a virtual simulation of how a development of 5 semi-detached villas would look like on the plot. Possibility of building up to 6 townhouses. UAS 2 Typology, 40% Buildable. The Overhead Electricity Lines that are seen in the photos when building can be buried, we have a budget from the electric company to do that. Oriented to the South-West, an ideal location to enjoy the warm winters of Fuengirola. Just 10 minutes to the center of Fuengirola, 6 minutes to the beach, and 25 minutes to Malaga airport by car. Call us and we will advise you with more details of what you can build on the plot

**Telephone: +34 691 71 05 45**

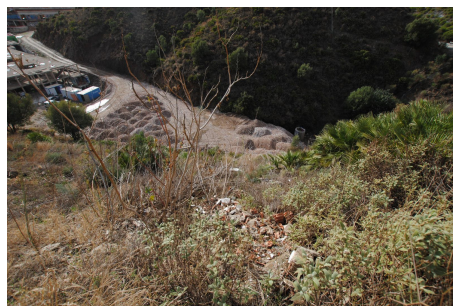
**Email: [sergio@apexmarbella.com](mailto:sergio@apexmarbella.com)**

APEX Marbella Property CC Doña Pepa. Local 6, La Reserva de Marbella - 29604, Marbella - Málaga

**APEX MARBELLA**  
PROPERTY



# Gallery



# Property Description

**Location:** Torreblanca, Costa del Sol, Spain

Urban Plot with Partial Sea Views to build semi-detached villas!!! In the photos we have included a virtual simulation of how a development of 5 semi-detached villas would look like on the plot.

Possibility of building up to 6 townhouses.

UAS 2 Typology, 40% Buildable.

The Overhead Electricity Lines that are seen in the photos when building can be buried, we have a budget from the electric company to do that.

Oriented to the South-West, an ideal location to enjoy the warm winters of Fuengirola. Just 10 minutes to the center of Fuengirola, 6 minutes to the beach, and 25 minutes to Malaga airport by car.

Call us and we will advise you with more details of what you can build on the plot

**Telephone:** +34 691 71 05 45

**Email:** [sergio@apexmarbella.com](mailto:sergio@apexmarbella.com)

APEX Marbella Property CC Doña Pepa. Local 6, La Reserva de Marbella - 29604, Marbella - Málaga





## Additional Info

For Sale	Type: Residential Plot	Land Area: 1516 sq m
Setting: Close To Sea	Close To Town	Close To Schools
Urbanisation	Orientation: South West	Views: Sea
Land Size : 1516 sq m		

Telephone: +34 691 71 05 45

Email: [sergio@apexmarbella.com](mailto:sergio@apexmarbella.com)

APEX Marbella Property CC Doña Pepa. Local 6, La Reserva de Marbella - 29604, Marbella - Málaga

