



8 Bed Detached Villa For Sale

€1,900,000

Benalmadena Costa, Costa del Sol

Ref: APEX04166164

This magnificent Villa located on the beachfront, has 8 bedrooms, 6 of which are in the Villa itself (on the first and second floor) and the other 2 in a guest flat from which we can enjoy the magnificent sea views, and from where we will have sun all day, with a south orientation and a beautiful garden where the star is the fabulous pool and a large pergola where we will protect us from the sun and enjoy the bar and barbecue bar and from where we can see the fabulous sunsets facing the sea. The property has about 482 m2 built on a plot of 1011 m2, with a closed garage for 2 cars and a parking for another 3. It also has 4 bathrooms, 3 spacious terraces, a large living room, independent kitchen, etc... A villa with many possibilities in a great location and very well communicated with the...

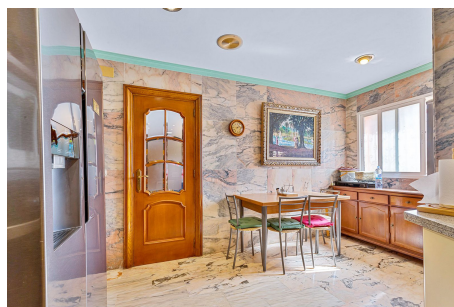
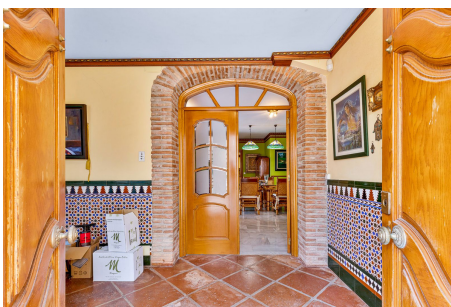
Telephone: +34 691 71 05 45

Email: sergio@apexmarbella.com

APEX Marbella Property CC Doña Pepa. Local 6, La Reserva de Marbella - 29604, Marbella - Málaga

APEX MARBELLA
PROPERTY

Gallery



Property Description

Location: Benalmadena Costa, Costa del Sol, Spain

This magnificent Villa located on the beachfront, has 8 bedrooms, 6 of which are in the Villa itself (on the first and second floor) and the other 2 in a guest flat from which we can enjoy the magnificent sea views, and from where we will have sun all day, with a south orientation and a beautiful garden where the star is the fabulous pool and a large pergola where we will protect us from the sun and enjoy the bar and barbecue bar and from where we can see the fabulous sunsets facing the sea. The property has about 482 m2 built on a plot of 1011 m2, with a closed garage for 2 cars and a parking for another 3.

It also has 4 bathrooms, 3 spacious terraces, a large living room, independent kitchen, etc...

A villa with many possibilities in a great location and very well communicated with the rest of the Costa del Sol.

The municipality of Benalmadena is located in the heart of the Costa del Sol, where are famous for its proximity to golf courses, great restaurants and surrounded by all services such as hotels, casino, a beautiful marina recognized worldwide as Puerto Marina.

Only 10 minutes from Malaga International Airport and 25 minutes from Marbella, the property is very close to the train stations of Torremuelle and Carvajal.

Telephone: +34 691 71 05 45

Email: sergio@apexmarbella.com

APEX Marbella Property CC Doña Pepa. Local 6, La Reserva de Marbella - 29604, Marbella - Málaga



Additional Info

For Sale	Beds: 8	Baths: 4
Type: Detached Villa	Area: 483 sq m	Land Area: 1011 sq m
Pool	Setting: Beachfront	Beachside
Close To Sea	Close To Schools	Orientation: South
Condition: Good	Pool: Private	Climate Control: Air Conditioning
Views: Sea	Mountain	Panoramic
Garden	Pool	Fitted Wardrobes
Private Terrace	Storage Room	Utility Room
Furniture: Part Furnished	Kitchen: Fully Fitted	Garden: Private
Security: Entry Phone	Alarm System	Safe
Parking: Garage	Covered	Utilities: Electricity
Drinkable Water	Telephone	Category: Beachfront
Internal Area : 483 sq m	Land Size : 1011 sq m	

Telephone: +34 691 71 05 45

Email: sergio@apexmarbella.com

APEX Marbella Property CC Doña Pepa. Local 6, La Reserva de Marbella - 29604, Marbella - Málaga