

3 Bed Penthouse For Sale

Benalmadena, Costa del Sol

€795,000

Ref: APEX04055650

A SUPERB AND UNIQUE PENTHOUSE AFFORDING PANORAMIC 180 DEGREE SEA VIEWS AND SITUATED CLOSE TO THE WHITE WASHED AND HISTORIC VILLAGE OF BENALMADENA AND THE BEACH. South orientation. 2 private parking spaces behind a barrier and a storeroom. AT A GLANCE 3 DOUBLE BEDROOMS 3 BATHROOMS (2 EN SUITE) HUGE TERRACES SPECTACULAR VIEWS This wonderful penthouse takes up the whole of the top floor of this small block of just 5 apartments in this sought after urbanisation and has no immediate neighbors to the sides. Lift and stair access to the top floor (2nd floor). Entrance to the reception hallway with storage. Fully fitted, quality Italian kitchen/breakfast room with stainless steel appliances and granite work surfaces. Access to the impressive terrace. Spacious, dual aspect lounge/diner with f...

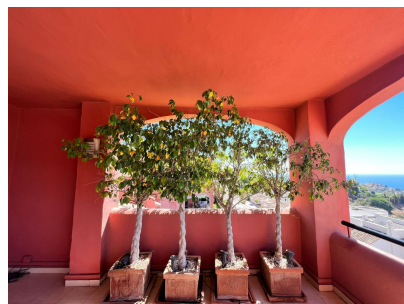
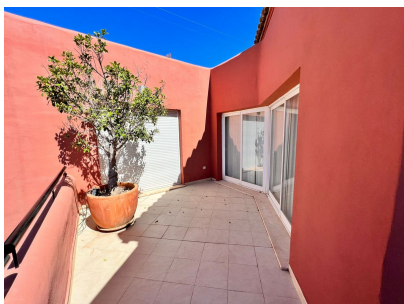
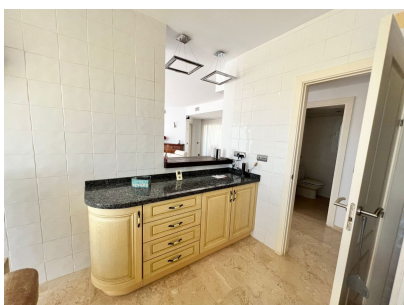
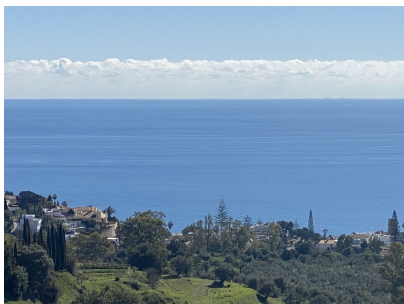
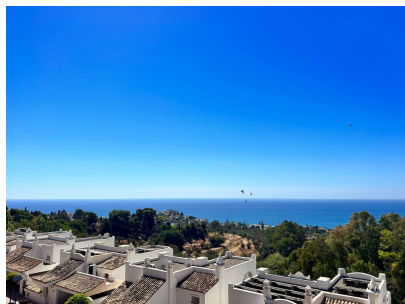
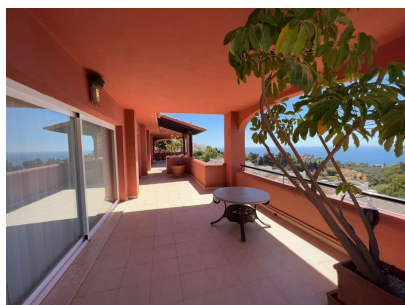
Telephone: +34 691 71 05 45

Email: sergio@apexmarbella.com

APEX Marbella Property CC Doña Pepa. Local 6, La Reserva de Marbella - 29604, Marbella - Málaga

APEX MARBELLA
PROPERTY

Gallery



Property Description

Location: Benalmadena, Costa del Sol, Spain

A SUPERB AND UNIQUE PENTHOUSE AFFORDING PANORAMIC 180 DEGREE SEA VIEWS AND SITUATED CLOSE TO THE WHITE WASHED AND HISTORIC VILLAGE OF BENALMADENA AND THE BEACH.

South orientation. 2 private parking spaces behind a barrier and a storeroom.

AT A GLANCE

3 DOUBLE BEDROOMS

3 BATHROOMS (2 EN SUITE)

HUGE TERRACES

SPECTACULAR VIEWS

This wonderful penthouse takes up the whole of the top floor of this small block of just 5 apartments in this sought after urbanisation and has no immediate neighbors to the sides.

Lift and stair access to the top floor (2nd floor).

Entrance to the reception hallway with storage.

Fully fitted, quality Italian kitchen/breakfast room with stainless steel appliances and granite work surfaces. Access to the impressive terrace.

Spacious, dual aspect lounge/diner with feature fireplace and access to the terrace.

Cloakroom adjacent to a very large utility/storage room. Neighboring this is a large, glassed in rear terrace which is currently used as a games room, but could be converted to a lovely 4th bedroom with en suite STPP.

Also to this side of the property is a spacious guest bedroom with en suite with bath and shower over and access to the large wrap around terrace.

To the other side of the entrance hall is access to a further guest bedroom with en suite facilities, together with a large Master bedroom, with plenty of storage, an en suite and access to the terrace.

ADDITIONAL FEATURES

Ducted air conditioning hot/cold

Tiled floors

Plenty of storage

Alarm system

In built Bose music system

Double glazed

Casita/storeroom

COMMUNITY FACILITIES

22 meter pool

Children's pool

Well tended and mature landscaped gardens

The property is located within walking distance to Benalmadena Pueblo (on a hill) and also to the beach, railway station and a tennis club.

We highly recommend the viewing of this outstanding property.

BEACH 3 MINUTE DRIVE MALAGA 20 MINUTES MARBELLA 25 MINUTES BENALMADENA VILLAGE 3 MINUTE DRIVE

Telephone: +34 691 71 05 45

Email: sergio@apexmarbella.com

APEX Marbella Property CC Doña Pepa. Local 6, La Reserva de Marbella - 29604, Marbella - Málaga



Additional Info

For Sale	Beds: 3	Baths: 3
Type: Penthouse	Area: 260 sq m	Pool
Setting: Close To Golf	Close To Sea	Close To Town
Close To Schools	Urbanisation	Orientation: South
Condition: Excellent	Pool: Communal	Children`s Pool
Views: Sea	Lift	Fitted Wardrobes
Private Terrace	Tennis Court	Storage Room
Ensuite Bathroom	Kitchen: Fully Fitted	Garden: Communal
Security: Gated Complex	Parking: Private	Category: Luxury
Internal Area : 260 sq m		

Telephone: +34 691 71 05 45

Email: sergio@apexmarbella.com

APEX Marbella Property CC Doña Pepa. Local 6, La Reserva de Marbella - 29604, Marbella - Málaga