

4 Bed Semi-Detached House For Sale

Estepona, Costa del Sol

€730,000

Ref: APEX04120702

New Development: Prices from 730,000 € to 940,000 €. [Beds: 4 - 4] [Baths: 3 - 4] [Built size: 179.00 m2 - 222.00 m2]
 THE DEVELOPMENT For the realisation of this exclusive new boutique development of 10 attached villas, a plot with wonderful views of the sea, the golf course and the mountains has been chosen. ARCHITECTURE AND DESIGN The architecture seeks maximum expressiveness by combining three materials. The white facade brings us closer to an environment of sun and beach, combined with the dark gray stone, they generate spaces of greater depth, the vertical elements of aluminum imitation wood will give that tone of warmth that can be seen in the images. Materials with very low maintenance that make these facades not only an impressive vision but also consistent with the environment....

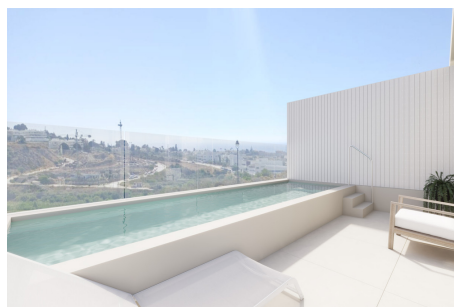
Telephone: +34 691 71 05 45

Email: sergio@apexmarbella.com

APEX Marbella Property CC Doña Pepa. Local 6, La Reserva de Marbella - 29604, Marbella - Málaga

APEX MARBELLA
PROPERTY

Gallery



Property Description

Location: Estepona, Costa del Sol, Spain

New Development: Prices from 730,000 € to 940,000 €. [Beds: 4 - 4] [Baths: 3 - 4] [Built size: 179.00 m2 - 222.00 m2]

THE DEVELOPMENT

For the realisation of this exclusive new boutique development of 10 attached villas, a plot with wonderful views of the sea, the golf course and the mountains has been chosen.

ARCHITECTURE AND DESIGN

The architecture seeks maximum expressiveness by combining three materials. The white facade brings us closer to an environment of sun and beach, combined with the dark gray stone, they generate spaces of greater depth, the vertical elements of aluminum imitation wood will give that tone of warmth that can be seen in the images.

Materials with very low maintenance that make these facades not only an impressive vision but also consistent with the environment.

QUALITIES

When the quality of the home is not just aesthetics, it is committed to using top brand materials, carrying out construction work with care and having excellent finishes.

Modern from its foundations, it produces hot water and hot-cold air conditioning, with a centralized aerothermal system, a clean way of generating energy. The radiant floor is supplied with energy in the same way.

THE VILLAGES

It is made up of single-family villas with three floors, they have 4 bedrooms, 3-4 bathrooms, 1-2 toilets and an office.

The villas located on the corners have their own garden and private pool with salt chlorination. The central villas have the pool located on the third floor of the house. The open and functional spaces are undoubtedly the protagonists of the homes, they connect us with the terraces and their wonderful views of the sea, golf course and mountains.

DESCRIPTION OF THE AREA

The new-build development is located in one of the most important towns on the Costa del Sol, Estepona, the so-called Jardín de Andalucía. Just 30 km from the city of Marbella is this municipality with more than 21 km of coastline, where you can discover its magical corners and its cosmopolitan spirit.

The Urbanization is located in the WEST area of Estepona, a residential area that is in full expansion of luxury homes.

Just 5 minutes by car from the center of Estepona and very close to the beaches, it is right next to the new Estepona hospital and the new Azata Golf course.

Close to restaurants, supermarkets, beaches, golf courses and services. It is only 20 minutes by car

from Puerto Banús, Marbella, and Sotogrande, 50 minutes from Malaga International Airport and 40 minutes from Gibraltar Airport.

Telephone: +34 691 71 05 45
Email: sergio@apexmarbella.com

APEX Marbella Property CC Doña Pepa. Local 6, La Reserva de
Marbella - 29604, Marbella - Málaga



Additional Info

For Sale	Beds: 4	Baths: 3
Type: Semi-Detached House	Area: 207 sq m	Land Area: 129 sq m
Pool	Setting: Close To Golf	Close To Sea
Orientation: South East	Pool: Private	Climate Control: Hot A/C
Cold A/C	U/F/H Bathrooms	Views: Mountain
Golf	Beach	Garden
Fitted Wardrobes	Private Terrace	Solarium
Ensuite Bathroom	Double Glazing	Kitchen: Fully Fitted
Garden: Private	Parking: Garage	Open
Private	Category: New Development	Internal Area : 207 sq m
Land Size : 129 sq m		

Telephone: +34 691 71 05 45

Email: sergio@apexmarbella.com

APEX Marbella Property CC Doña Pepa. Local 6, La Reserva de Marbella - 29604, Marbella - Málaga

