

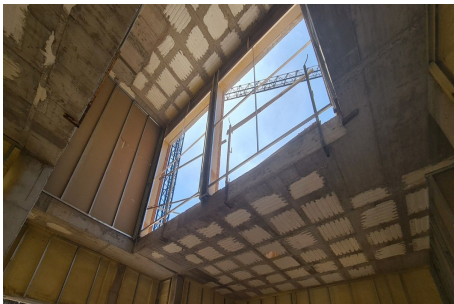


€2,300,000

Ref: APEX04058296

Telephone: +34 691 71 05 45
Email: sergio@apexmarbella.com
 APEX Marbella Property CC Doña Pepa. Local 6, La Reserva de
 Marbella - 29604, Marbella - Málaga

Gallery



Property Description

Location: Marbella, Costa del Sol, Spain

Wonderful villa located in Elviria-Marbella, privileged location, luxurious promotion, located in Santa María Golf complex that has a select Country Club, in addition to being surrounded by the main golf courses on the Costa del Sol. The villa has been meticulously designed in a modern style and contemporary, in high quality Porcelanosa, but at the same time with a functional distribution, which allows you to enjoy a comfortable and pleasant villa, where you can enjoy views of the Mediterranean Sea and the golf course.

Unbeatable area surrounded by primary services, just 10 minutes by car from the center of Marbella, 15 minutes from Puerto Banús and 5 minutes from the best beaches on the Costa del Sol.

House with 4 bedrooms, 4 en-suite bathrooms and a toilet, connected to all floors by elevator.

On the ground floor we have a bedroom with an en-suite bathroom, a spacious living-dining room with an open kitchen and access to a magnificent terrace that is next to a beautiful 12x3m2 saltwater pool.

The upper floor has 3 bedrooms, a dressing room and 3 en-suite bathrooms and the upper floor offers a solarium with a chill-out area to enjoy the magnificent sea views.

Basement floor with garage for 2 or more cars and extra room for possible gym or cinema.

Other extras: elevator, underfloor heating, solar panels, Porcelanosa tiles. Swimming pool, Fully equipped kitchen, Central heating, Golf view, Underfloor heating (bathrooms only), Wooden floors, Porcelain floors, Fitted wardrobes, Elevator, Garden view, Guest toilet, Panoramic view.

Telephone: +34 691 71 05 45

Email: sergio@apexmarbella.com

APEX Marbella Property CC Doña Pepa. Local 6, La Reserva de Marbella - 29604, Marbella - Málaga



Additional Info

For Sale	Beds: 4	Baths: 5
Type: Detached Villa	Area: 446 sq m	Land Area: 1011 sq m
Pool	Setting: Beachside	Close To Golf
Close To Port	Close To Sea	Close To Town
Close To Schools	Close To Forest	Close To Marina
Urbanisation	Orientation: North	North East
East	South East	South
South West	West	North West
Condition: New Construction	Pool: Private	Climate Control: Air Conditioning
Hot A/C	Cold A/C	Central Heating
U/F Heating	Views: Sea	Mountain
Golf	Garden	Pool
Covered Terrace	Lift	Fitted Wardrobes
Private Terrace	Utility Room	Ensuite Bathroom
Double Glazing	Domotics	Furniture: Not Furnished

Kitchen: Fully Fitted	Garden: Private	Security: Entry Phone
24 Hour Security	Parking: Underground	Garage
Covered	Private	Utilities: Electricity
Drinkable Water	Category: Golf	Holiday Homes
Investment	Luxury	Internal Area : 446 sq m
Land Size : 1011 sq m		