

## 2 Bed Penthouse For Sale

**Estepona, Costa del Sol**

**€680,000**

**Ref: APEX03454105**

Impressive duplex penthouse of 160 m2 in front of the beach with magnificent views of the sea and the port of Estepona. It is located in a secure and well-maintained urbanization with beautiful gardens, parks, two swimming pools and parking. The urbanization has maximum security with a guard that controls who accesses it. There is air conditioning, heating and elevator. The price is worth it. You will not find an equal apartment in the whole building. Penthouse, Estepona, Costa del Sol. 2 Bedrooms, 2 Bathrooms, Built 186 m<sup>2</sup>. Setting : Beachfront, Town, Beachside, Port, Close To Shops, Close To Sea, Close To Town, Close To Schools, Marina, Close To Marina, Front Line Beach Complex. Orientation : South, South West. Condition : Excellent. Pool : Communal. Climate Control : Air Conditioning,...

**Telephone: +34 691 71 05 45**

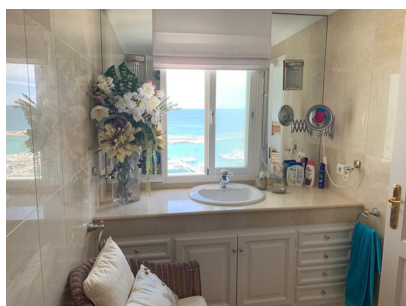
**Email: [sergio@apexmarbella.com](mailto:sergio@apexmarbella.com)**

APEX Marbella Property CC Doña Pepa. Local 6, La Reserva de Marbella - 29604, Marbella - Málaga

**APEX MARBELLA**  
PROPERTY



# Gallery



# Property Description

**Location:** Estepona, Costa del Sol, Spain

Impressive duplex penthouse of 160 m2 in front of the beach with magnificent views of the sea and the port of Estepona. It is located in a secure and well-maintained urbanization with beautiful gardens, parks, two swimming pools and parking. The urbanization has maximum security with a guard that controls who accesses it. There is air conditioning, heating and elevator. The price is worth it. You will not find an equal apartment in the whole building.

Penthouse, Estepona, Costa del Sol.

2 Bedrooms, 2 Bathrooms, Built 186 m<sup>2</sup>.

Setting : Beachfront, Town, Beachside, Port, Close To Shops, Close To Sea, Close To Town, Close To Schools, Marina, Close To Marina, Front Line Beach Complex.

Orientation : South, South West.

Condition : Excellent.

Pool : Communal.

Climate Control : Air Conditioning, Central Heating.

Views : Sea, Port, Panoramic.

Features : Lift, Fitted Wardrobes, Near Transport, Private Terrace, Storage Room, Marble Flooring, Double Glazing.

Kitchen : Fully Fitted.

Garden : Communal.

Security : Gated Complex.

Parking : Garage.

Utilities : Electricity, Drinkable Water.

Category : Beachfront, Holiday Homes, Investment.

**Telephone:** +34 691 71 05 45

**Email:** [sergio@apexmarbella.com](mailto:sergio@apexmarbella.com)

APEX Marbella Property CC Doña Pepa. Local 6, La Reserva de Marbella - 29604, Marbella - Málaga



# Additional Info

For Sale	Beds: 2	Baths: 2
Type: Penthouse	Area: 186 sq m	Pool
Setting: Beachfront	Town	Beachside
Port	Close To Shops	Close To Sea
Close To Town	Close To Schools	Marina
Close To Marina	Front Line Beach Complex	Orientation: South
South West	Condition: Excellent	Pool: Communal
Climate Control: Air Conditioning	Central Heating	Views: Sea
Port	Panoramic	Lift
Fitted Wardrobes	Near Transport	Private Terrace
Storage Room	Marble Flooring	Double Glazing
Kitchen: Fully Fitted	Garden: Communal	Security: Gated Complex
Parking: Garage	Utilities: Electricity	Drinkable Water
Category: Beachfront	Holiday Homes	Investment

Telephone: +34 691 71 05 45

Email: [sergio@apexmarbella.com](mailto:sergio@apexmarbella.com)

APEX Marbella Property CC Doña Pepa. Local 6, La Reserva de

Marbella - 29604, Marbella - Málaga

