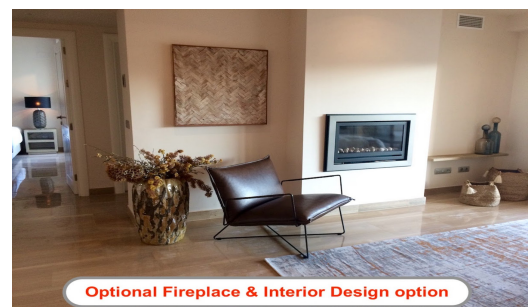




Interior Design option



Optional Fireplace & Interior Design option

## 2 Bed Ground Floor Apartment For Sale

Mijas Costa, Costa del Sol

**€400,000**

Ref: APEX04040146

New, very large, south-facing 2-bed/2-bath apartment (115m<sup>2</sup>) in the exclusive private community 'Castillo del Cerrado'. With two large sunny terraces (66m<sup>2</sup>) it offers panoramic sea and mountain views, as well as direct access to the extensive pool and garden areas. The apartment is equipped with high-quality features including Italian marble floors, heated bathroom floors, home automation system, ducted air-conditioning, separate laundry room, etc. This apartment is new/unused, and has no kitchen cabinets/equipment yet. Optionally, we will install a brand-new, luxury kitchen (in consultation with the buyer) before transfer of the property. The costs of typically kitchen packages ranges from €20-€35k. An interior designer is available for all clients, and further changes, like a...

Telephone: +34 691 71 05 45

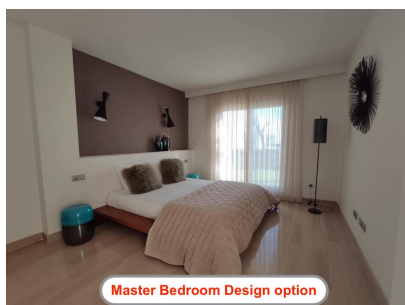
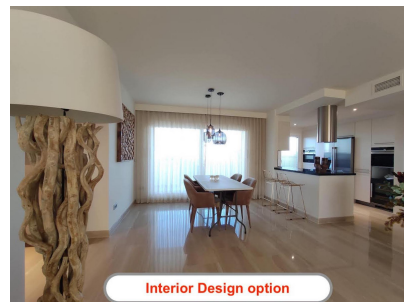
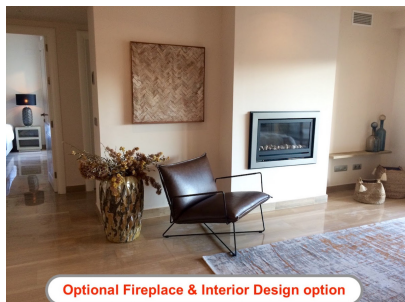
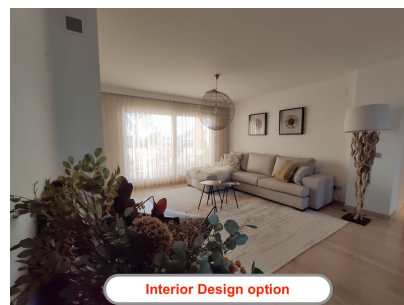
Email: [sergio@apexmarbella.com](mailto:sergio@apexmarbella.com)

APEX Marbella Property CC Doña Pepa. Local 6, La Reserva de Marbella - 29604, Marbella - Málaga

**APEX MARBELLA**  
PROPERTY



# Gallery



# Property Description

**Location:** Mijas Costa, Costa del Sol, Spain

New, very large, south-facing 2-bed/2-bath apartment (115m<sup>2</sup>) in the exclusive private community 'Castillo del Cerrado'.

With two large sunny terraces (66m<sup>2</sup>) it offers panoramic sea and mountain views, as well as direct access to the extensive pool and garden areas.

The apartment is equipped with high-quality features including Italian marble floors, heated bathroom floors, home automation system, ducted air-conditioning, separate laundry room, etc.

This apartment is new/unused, and has no kitchen cabinets/equipment yet. Optionally, we will install a brand-new, luxury kitchen (in consultation with the buyer) before transfer of the property. The costs of typically kitchen packages ranges from €20-€35k. An interior designer is available for all clients, and further changes, like a gas fireplace, can be installed as optional extras before moving in.

The private gated community has extensive garden areas (directly accessible from your terrace) with a large exterior pool and an architectural designed heated indoor spa.

With only 5 apartments in your building and no shared walls with neighbours, it guarantees tranquillity and privacy with triple-level security and dual video entrance control.

To guarantee maximum privacy and enjoyment for all residents the community does not allow short-term rentals (long-term rentals allowed).

Due to its elevated location, Castillo del Cerrado offers spectacular views next to golf, tennis, paddle, bars/restaurants and only 3km from Miramar/beach. It is conveniently located between Malaga & Marbella, close to the vibrant village of Fuengirola and only 20min from the airport.

The apartment comes with underground parking and a large storage room.

The price per m2 is extremely competitive with units of the same quality.

# Additional Info

For Sale	Beds: 2	Baths: 2
Type: Ground Floor Apartment	Area: 181 sq m	Land Area: 66 sq m
Pool	Setting: Frontline Golf	Close To Sea
Close To Town	Orientation: South	Condition: Excellent
Pool: Communal	Indoor	Heated
Children`s Pool	Climate Control: Air Conditioning	U/F/H Bathrooms
Views: Sea	Mountain	Golf
Panoramic	Garden	Pool
Fitted Wardrobes	Storage Room	Utility Room
Ensuite Bathroom	Marble Flooring	Domotics
Fiber Optic	Furniture: Not Furnished	Optional
Kitchen: Not Fitted	Garden: Communal	Security: Gated Complex
Entry Phone	Alarm System	Parking: Private
Utilities: Electricity	Drinkable Water	Category: Golf
Luxury	Resale	Internal Area : 181 sq m

Land Size : 66 sq m

**Telephone: +34 691 71 05 45**  
**Email: [sergio@apexmarbella.com](mailto:sergio@apexmarbella.com)**

APEX Marbella Property CC Doña Pepa. Local 6, La Reserva de  
Marbella - 29604, Marbella - Málaga

