

Commercial Plot For Sale

€1,950,000

Nueva Andalucía, Costa del Sol

Ref: APEX03484627

GREAT INVESTMENT OPPORTUNITY !Independent building completely renovated. Centrally located in Nueva Andalucía, easy to find. Ground floor currently used as offices, 1. floor currently used as 2 apartments. Large entrance patio (partly covered) for parking 12 cars . Ample parking in the street. Ideal for Business or Medical Center. Ready to move in and operate! Official valuation for 1.930.518.- € dated 8.1.2019

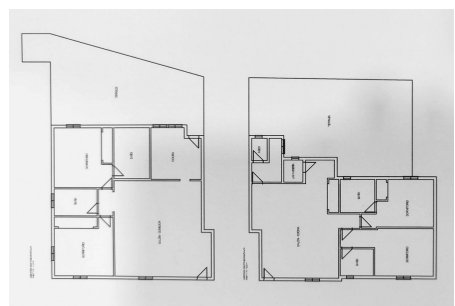
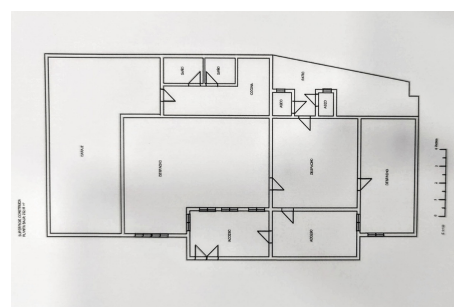
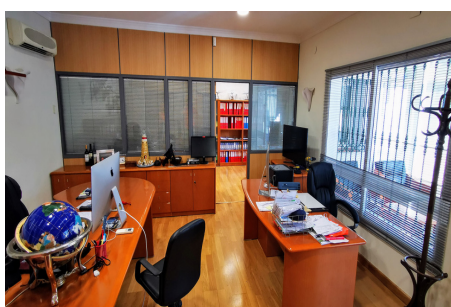
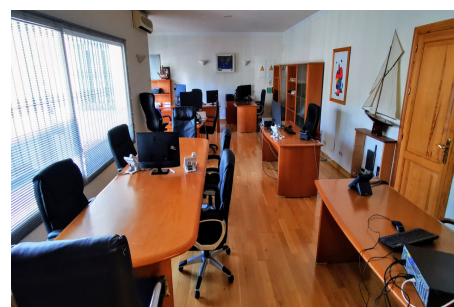
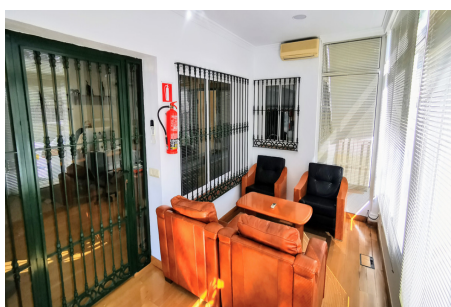
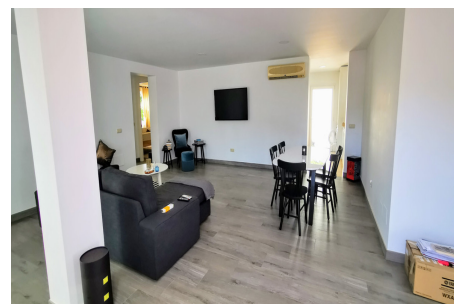
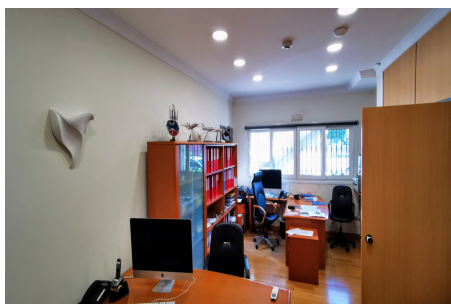
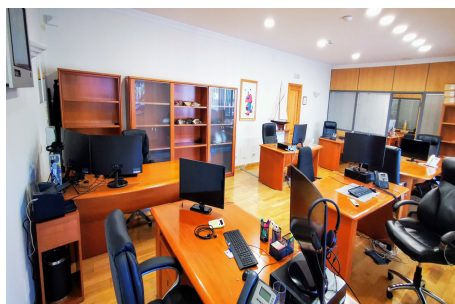
Telephone: +34 691 71 05 45

Email: sergio@apexmarbella.com

APEX Marbella Property CC Doña Pepa. Local 6, La Reserva de Marbella - 29604, Marbella - Málaga

APEX MARBELLA
PROPERTY

Gallery



Property Description

Location: Nueva Andalucía, Costa del Sol, Spain

GREAT INVESTMENT OPPORTUNITY !Independent building completely renovated. Centrally located in Nueva Andalucía, easy to find. Ground floor currently used as offices, 1. floor currently used as 2 apartments. Large entrance patio (partly covered) for parking 12 cars . Ample parking in the street. Ideal for Business or Medical Center. Ready to move in and operate!

Official valuation for 1.930.518.- € dated 8.1.2019

Telephone: +34 691 71 05 45

Email: sergio@apexmarbella.com

APEX Marbella Property CC Doña Pepa. Local 6, La Reserva de Marbella - 29604, Marbella - Málaga



Additional Info

For Sale	Type: Commercial Plot	Area: 517 sq m
Land Area: 834 sq m	Setting: Commercial Area	Close To Shops
Orientation: East	Condition: Excellent	Recently Renovated
Climate Control: Air Conditioning	Covered Terrace	Private Terrace
Utility Room	Furniture: Fully Furnished	Kitchen: Fully Fitted
Parking: Covered	More Than One	Category: Investment
Internal Area : 517 sq m	Land Size : 834 sq m	

Telephone: +34 691 71 05 45

Email: sergio@apexmarbella.com

APEX Marbella Property CC Doña Pepa. Local 6, La Reserva de Marbella - 29604, Marbella - Málaga

