



## 5 Bed Detached Villa For Sale

€1,100,000

**Benalmadena Pueblo, Costa del Sol**

**Ref: APEX03971629**

Fantastic villa in Benalmádena Pueblo. PRIME LOCATION walking distance to amenities and services. Large garden and sunny terraces with beautiful SEA and MOUNTAINS VIEWS. 500 m2 plot with lot of privacy. It has covered garage + surface parking at the entrance of the property. The property was renovated in 2004 and is ready to move in. It has fireplace in the lounge, air conditioning in the whole house, double glazed windows and alarm system. Option to expand the house since the buildable area of the plot is 500 m2 and there are currently 247 m2 built. The distribution is as follows: -Main floor: Hall, lounge with access to the garden, kitchen with access to the terrace, 2 bedrooms, office and bathroom. -Top floor: 2 bedrooms + 2 bathrooms (both of them en suite), laundry room and lar...

**Telephone: +34 691 71 05 45**

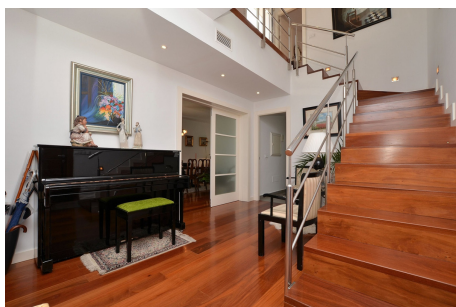
**Email: [sergio@apexmarbella.com](mailto:sergio@apexmarbella.com)**

APEX Marbella Property CC Doña Pepa. Local 6, La Reserva de Marbella - 29604, Marbella - Málaga

**APEX MARBELLA**  
PROPERTY



# Gallery



# Property Description

**Location:** Benalmadena Pueblo, Costa del Sol, Spain

Fantastic villa in Benalmádena Pueblo. PRIME LOCATION walking distance to amenities and services.

Large garden and sunny terraces with beautiful SEA and MOUNTAINS VIEWS.

500 m2 plot with lot of privacy. It has covered garage + surface parking at the entrance of the property.

The property was renovated in 2004 and is ready to move in.

It has fireplace in the lounge, air conditioning in the whole house, double glazed windows and alarm system.

Option to expand the house since the buildable area of the plot is 500 m2 and there are currently 247 m2 built.

The distribution is as follows:

- Main floor: Hall, lounge with access to the garden, kitchen with access to the terrace, 2 bedrooms, office and bathroom.
- Top floor: 2 bedrooms + 2 bathrooms (both of them en suite), laundry room and large terrace with beautiful views.

Plot: 500 m2. Built size: 247 m2. Floors: 2. Orientation: South.

# Additional Info

For Sale	Beds: 5	Baths: 3
Type: Detached Villa	Area: 305 sq m	Land Area: 500 sq m
Setting: Close To Shops	Close To Town	Close To Schools
Orientation: South	Condition: Excellent	Climate Control: Air Conditioning
Fireplace	Views: Sea	Mountain
Covered Terrace	Fitted Wardrobes	Near Transport
Private Terrace	Storage Room	Utility Room
Ensuite Bathroom	Double Glazing	Kitchen: Fully Fitted
Garden: Private	Security: Entry Phone	Alarm System
Parking: Garage	Private	Category: Luxury
Internal Area : 305 sq m	Land Size : 500 sq m	

Telephone: +34 691 71 05 45

Email: [sergio@apexmarbella.com](mailto:sergio@apexmarbella.com)

APEX Marbella Property CC Doña Pepa. Local 6, La Reserva de Marbella - 29604, Marbella - Málaga

