



6 Bed Ground Floor Apartment For Sale

€4,200,000

Puerto Banús, Costa del Sol

Ref: APEX02768600

This unique large beachfront garden duplex occupies the front line to the beach only steps away from a private gate onto the promenade in Puerto Banus. The unique property has been sub-divided into 4 separate apartments sharing a common private entry foyer to ideally suit a large extended family or group of friends buying together, or as a rental investment. Each of the apartments has its own title deed, allowing a buyer re-sell any of the properties. Options exit to re-combine the upper or lower 2 apartments, or the entire duplex. Located right on the beachfront in central Puerto Banus, there are two apartments on the ground floor with direct garden access, and two on the first floor with private terraces. All four apartments offer wonderful sea views right on the beachfront, and have the...

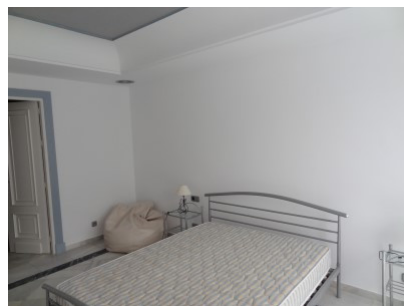
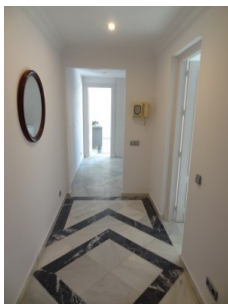
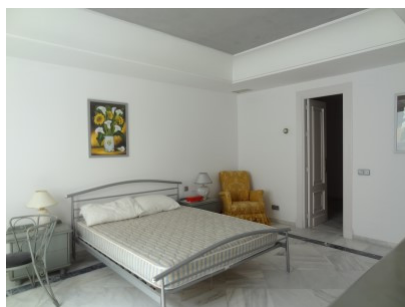
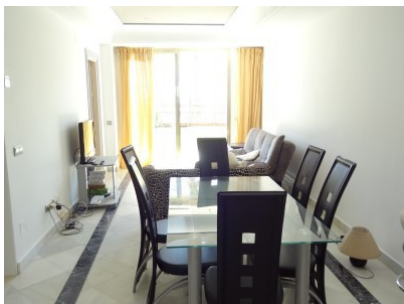
Telephone: +34 691 71 05 45

Email: sergio@apexmarbella.com

APEX Marbella Property CC Doña Pepa. Local 6, La Reserva de Marbella - 29604, Marbella - Málaga

APEX MARBELLA
PROPERTY

Gallery



Property Description

Location: Puerto Banús, Costa del Sol, Spain

This unique large beachfront garden duplex occupies the front line to the beach only steps away from a private gate onto the promenade in Puerto Banus. The unique property has been sub-divided into 4 separate apartments sharing a common private entry foyer to ideally suit a large extended family or group of friends buying together, or as a rental investment. Each of the apartments has its own title deed, allowing a buyer re-sell any of the properties. Options exit to re-combine the upper or lower 2 apartments, or the entire duplex. Located right on the beachfront in central Puerto Banus, there are two apartments on the ground floor with direct garden access, and two on the first floor with private terraces. All four apartments offer wonderful sea views right on the beachfront, and have their own small kitchens and lounges. There are 2 x 2 bed apartments (145m² each) + 2 x 1 bed apartments (130 m² each) each with their own entrances. 3 underground parking spaces included. The complex also offers a large communal swimming pool and direct beach access. A unique set-up right on the beachfront in Puerto Banus.

Telephone: +34 691 71 05 45

Email: sergio@apexmarbella.com

APEX Marbella Property CC Doña Pepa. Local 6, La Reserva de Marbella - 29604, Marbella - Málaga



Additional Info

For Sale	Beds: 6	Baths: 6
Type: Ground Floor Apartment	Area: 663 sq m	Pool
Setting: Beachfront	Town	Commercial Area
Beachside	Port	Close To Port
Close To Shops	Close To Sea	Close To Town
Close To Schools	Marina	Close To Marina
Front Line Beach Complex	Orientation: South	Condition: Excellent
Pool: Communal	Climate Control: Air Conditioning	Views: Sea
Beach	Panoramic	Lift
Fitted Wardrobes	Near Transport	Private Terrace
Satellite TV	WiFi	Guest Apartment
Storage Room	Utility Room	Ensuite Bathroom
Marble Flooring	Jacuzzi	Barbeque
Double Glazing	Near Mosque	Near Church
Kitchen: Fully Fitted	Garden: Communal	Security: Gated Complex

Electric Blinds	Entry Phone	Alarm System
Parking: Underground	More Than One	Category: Beachfront
Holiday Homes	Investment	Luxury
Reduced	Resale	Internal Area : 663 sq m