

5 Bed Ground Floor Apartment For Sale

€4,300,000

Puerto Banús, Costa del Sol

Ref: APEX02768582

A huge 5 bed beachfront duplex garden apartment with wonderful sea views right on the beachfront in Puerto Banus - only a minute's walk to all first class amenities in Puerto Banus. The property offers over 2 levels; a huge open plan living area, a large modern kitchen with breakfast bar open to the lounge, 5 en-suite bedrooms and 2 underground parking spaces + storage. The property features 2 entrances, including one directly from the underground parking for maximum convenience. The complex offers a large communal swimming pool and direct beach access. A unique opportunity for extremely spacious living on the beachfront in Puerto Banus.

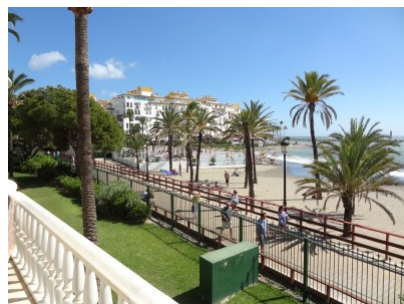
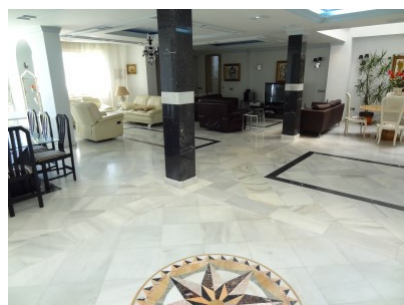
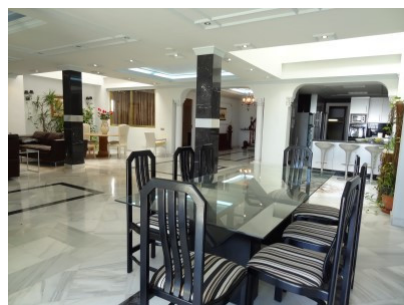
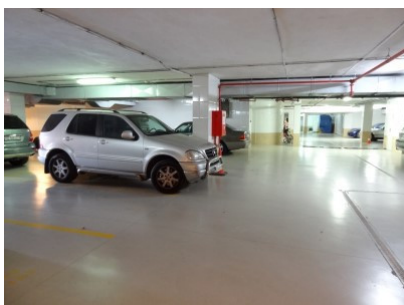
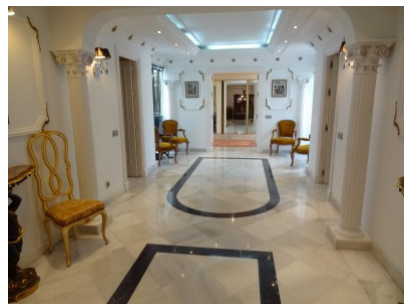
Telephone: +34 691 71 05 45

Email: sergio@apexmarbella.com

APEX Marbella Property CC Doña Pepa. Local 6, La Reserva de Marbella - 29604, Marbella - Málaga


APEX MARBELLA
PROPERTY

Gallery



Property Description

Location: Puerto Banús, Costa del Sol, Spain

A huge 5 bed beachfront duplex garden apartment with wonderful sea views right on the beachfront in Puerto Banus - only a minute's walk to all first class amenities in Puerto Banus. The property offers over 2 levels; a huge open plan living area, a large modern kitchen with breakfast bar open to the lounge, 5 en-suite bedrooms and 2 underground parking spaces + storage. The property features 2 entrances, including one directly from the underground parking for maximum convenience. The complex offers a large communal swimming pool and direct beach access. A unique opportunity for extremely spacious living on the beachfront in Puerto Banus.

Telephone: +34 691 71 05 45

Email: sergio@apexmarbella.com

APEX Marbella Property CC Doña Pepa. Local 6, La Reserva de Marbella - 29604, Marbella - Málaga



Additional Info

For Sale	Beds: 5	Baths: 5
Type: Ground Floor Apartment	Area: 556 sq m	Pool
Setting: Beachfront	Town	Commercial Area
Beachside	Port	Close To Port
Close To Shops	Close To Sea	Close To Town
Close To Schools	Marina	Close To Marina
Front Line Beach Complex	Orientation: South	Condition: Excellent
Pool: Communal	Climate Control: Air Conditioning	Views: Sea
Beach	Panoramic	Lift
Fitted Wardrobes	Near Transport	Private Terrace
Satellite TV	WiFi	Storage Room
Utility Room	Ensuite Bathroom	Marble Flooring
Jacuzzi	Barbeque	Double Glazing
Near Mosque	Staff Accommodation	Near Church
Kitchen: Fully Fitted	Garden: Communal	Security: Gated Complex

Electric Blinds

Entry Phone

Alarm System

Parking: Underground

More Than One

Communal

Category: Beachfront

Holiday Homes

Luxury

Reduced

Resale

Internal Area : 556 sq m

Telephone: +34 691 71 05 45

Email: sergio@apexmarbella.com

APEX Marbella Property CC Doña Pepa. Local 6, La Reserva de
Marbella - 29604, Marbella - Málaga

