



Residential Plot For Sale

€1,600,000

Alpandei, Costa del Sol

Ref: APEX03405760

FINCA OF 100 HECTARES, IT COULD BE A HOTEL Rustic property of 1.060.633 m2 with residential use with project for the construction of a hotel tourist complex, in the municipality of Alpandei (Valle del Genal) with great views of the Serrania de Ronda, 15 km from Ronda and 10 minutes from the future Ronda- Costa del Sol. Country property, which makes it very suitable for walking, riding or cycling. With extraordinary panoramic views of the valley. Trees: cork oaks, oaks and chestnuts. Cork production of about 3,000 quintals. Currently it has 8 warehouses (10,000 m2 approximately); 2 houses for workers and a farmhouse with 6 rooms to restore. Municipal support: declared area of public and social interest in the municipal council of Alpandei.

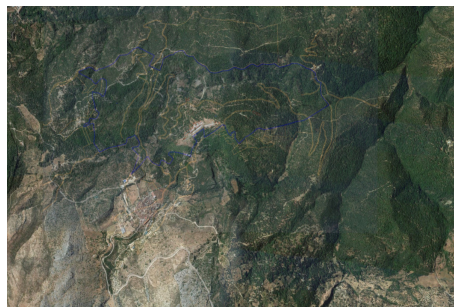
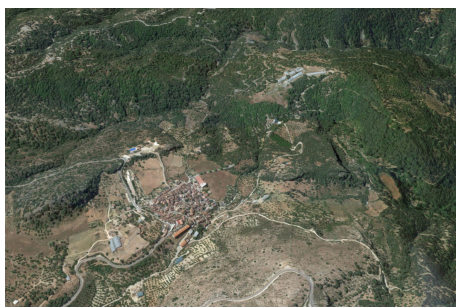
Telephone: +34 691 71 05 45

Email: sergio@apexmarbella.com

APEX Marbella Property CC Doña Pepa. Local 6, La Reserva de Marbella - 29604, Marbella - Málaga



Gallery



Property Description

Location: Alpandeire, Costa del Sol, Spain

FINCA OF 100 HECTARES, IT COULD BE A HOTEL

Rustic property of 1.060.633 m² with residential use with project for the construction of a hotel tourist complex, in the municipality of Alpandeire (Valle del Genal) with great views of the Serrania de Ronda, 15 km from Ronda and 10 minutes from the future Ronda- Costa del Sol. Country property, which makes it very suitable for walking, riding or cycling. With extraordinary panoramic views of the valley.

Trees: cork oaks, oaks and chestnuts. Cork production of about 3,000 quintals.

Currently it has 8 warehouses (10,000 m² approximately); 2 houses for workers and a farmhouse with 6 rooms to restore.

Municipal support: declared area of public and social interest in the municipal council of Alpandeire.

Telephone: +34 691 71 05 45

Email: sergio@apexmarbella.com

APEX Marbella Property CC Doña Pepa. Local 6, La Reserva de Marbella - 29604, Marbella - Málaga



Additional Info

For Sale	Type: Residential Plot	Land Area: 1060633 sq m
Setting: Village	Mountain Pueblo	Close To Forest
Orientation: North	East	South
West	Views: Mountain	Country
Panoramic	Forest	Category: Investment
Land Size : 1060633 sq m		

Telephone: +34 691 71 05 45

Email: sergio@apexmarbella.com

APEX Marbella Property CC Doña Pepa. Local 6, La Reserva de Marbella - 29604, Marbella - Málaga

