

36 Bed Commercial Plot For Sale

€12,000,000

Puerto Banús, Costa del Sol

Ref: APEX02769587

A complete apartment complex near the Casino in Puerto Banus, located within 5 minutes walking distance to the beach, and 10 minutes into the centre of the port, consisting of 17 apartments with very good sized private terraces (3008 m2), including 2 very large penthouse duplexes with private plunge pools, 3 commercial units (712 m2), and underground parking for 22 cars, as well as 10 external guest parking spaces. Gated with communal swimming pool and close walking distance to the beach and all amenities. All the apartments are notably spacious, with large part covered terraces. The two penthouses are huge (300m2 + extremely large terraces) and in good condition, while the 15 apartments are in need of renovation. In total there are 9 x 2 beds + 4 x 1 beds + 1 x 3 bed + 1 x 4 bed + 2 x pen...

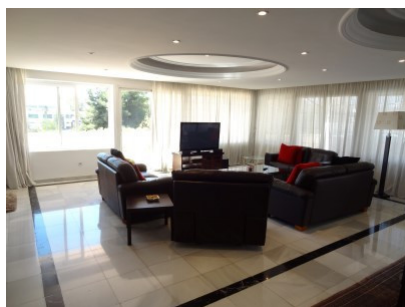
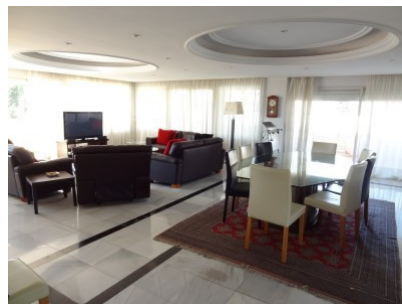
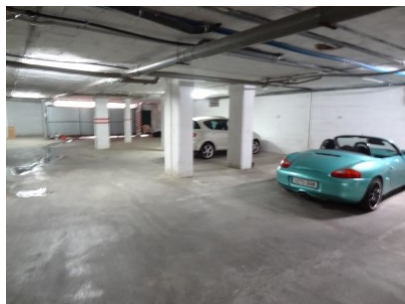
Telephone: +34 691 71 05 45

Email: sergio@apexmarbella.com

APEX Marbella Property CC Doña Pepa. Local 6, La Reserva de Marbella - 29604, Marbella - Málaga

APEX MARBELLA
PROPERTY

Gallery



Property Description

Location: Puerto Banús, Costa del Sol, Spain

A complete apartment complex near the Casino in Puerto Banus, located within 5 minutes walking distance to the beach, and 10 minutes into the centre of the port, consisting of 17 apartments with very good sized private terraces (3008 m2), including 2 very large penthouse duplexes with private plunge pools, 3 commercial units (712 m2), and underground parking for 22 cars, as well as 10 external guest parking spaces. Gated with communal swimming pool and close walking distance to the beach and all amenities. All the apartments are notably spacious, with large part covered terraces. The two penthouses are huge (300m2 + extremely large terraces) and in good condition, while the 15 apartments are in need of renovation. In total there are 9 x 2 beds + 4 x 1 beds + 1 x 3 bed + 1 x 4 bed + 2 x penthouse duplexes (4 & 3 beds). The land also has its own well which provides all the water for the complex, and solar for water heating. An ideal site for an apart-hotel or luxury renovation project for resale or rental investment. Open to offers, making this a unique investment opportunity not to be missed in this top location!

Telephone: +34 691 71 05 45

Email: sergio@apexmarbella.com

APEX Marbella Property CC Doña Pepa. Local 6, La Reserva de Marbella - 29604, Marbella - Málaga



Additional Info

For Sale	Beds: 36	Baths: 40
Type: Commercial Plot	Area: 4480 sq m	Land Area: 3078 sq m
Pool	Setting: Town	Commercial Area
Port	Close To Port	Close To Shops
Close To Sea	Close To Town	Close To Marina
Orientation: South	Pool: Communal	Climate Control: Air Conditioning
Views: Sea	Mountain	Garden
Urban	Covered Terrace	Lift
Near Transport	Private Terrace	WiFi
Storage Room	Utility Room	Marble Flooring
Double Glazing	Near Church	Garden: Communal
Security: Gated Complex	Parking: Underground	More Than One
Communal	Category: Distressed	Investment
Internal Area : 4480 sq m	Land Size : 3078 sq m	

Telephone: +34 691 71 05 45

Email: sergio@apexmarbella.com

APEX Marbella Property CC Doña Pepa. Local 6, La Reserva de

Marbella - 29604, Marbella - Málaga

